

Mine Stability:

Over the last few years there have been significant advancements in the understanding of mine stability. From drive stability to the stability of large open pit slopes, numerical analysis techniques and procedures have become available that allow more accurate forecasting and more reliable design of mine excavations.

To help foster industry participation in these new developments, Beck Arndt Engineering and Coffey Mining will hold a one and a half day seminar on Mine Stability and Field Measurements in NW Tasmania on the 2nd and 3rd of June, 2008. The seminar will draw on the content of Masters courses in rock mechanics that BAE has conducted over recent years, so will cover both theory and applications.

The topics covered will include:

- Mechanics and fundamentals of mine instability
- Simulation and forecasting of instability, damage and ground support performance
- Numerical simulation techniques for mine stability engineering (from simple to advanced)
- Integration of measurements into day-to-day rock mechanics, including an introduction to new field practical measurement technology by Coffeys Mining
- Seismological forecasting including probabilistic forecasting of mining induced seismicity

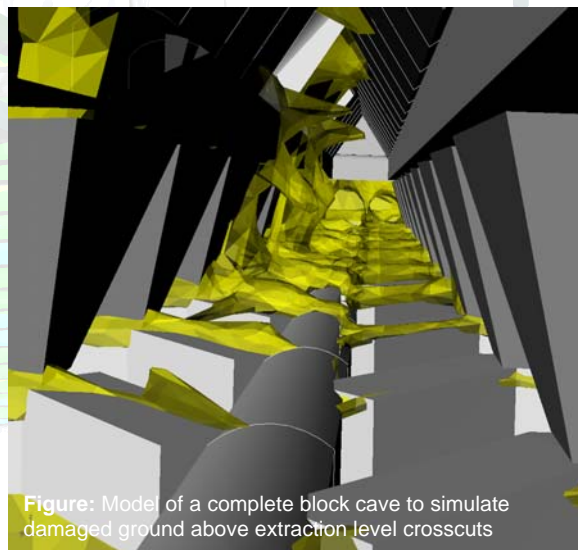
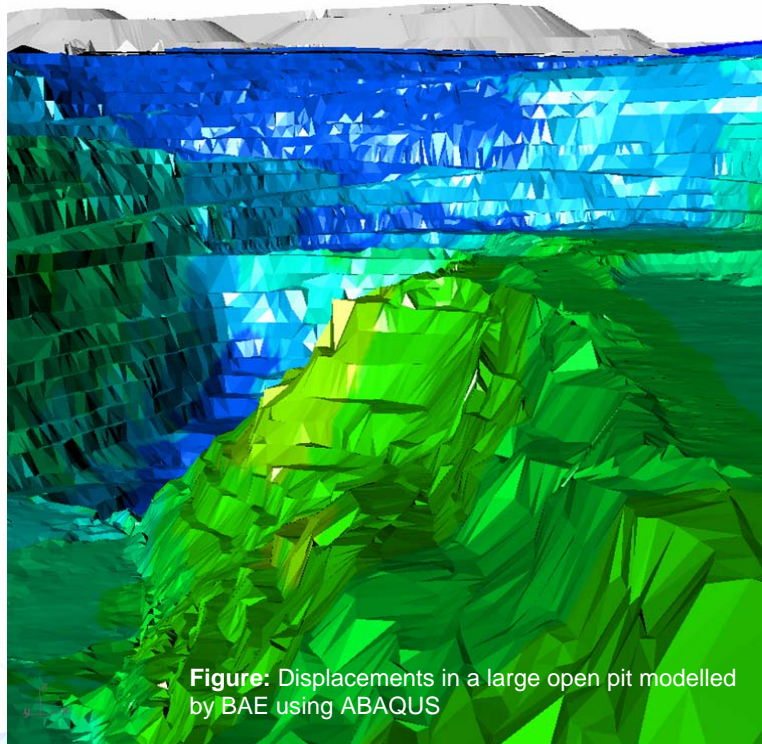
The seminar will start with fundamentals of stability before moving to case studies and examples. A number of case studies will be presented involving measurement, back analysis and direct simulation of mine scale deformation. There will also be time for questions and group discussions.

The seminar is free to anyone who is interested, but participants will have to arrange their own travel and accommodation.

Location: Cradle Mountain Lodge

Dates: 2nd and 3rd of June

RSVP: enquiries@beckarndt.com.au



Travel and Accommodation

- Attendees are responsible for their own travel and accommodation
- at Cradle Mountain Lodge. BAE have reserved a number of rooms—first in best dressed.
- PROVIDED— BAE will sponsor a dinner at the Lodge on Monday night (2nd). Lunch and morning and afternoon teas for Monday and Tuesday will be provided.
- Please book ASAP to guarantee a place.
- BAE can provide transport from Launceston airport to Cradle Mountain on the 1st of June, returning on Tuesday afternoon (3rd).
- Qantas flights arrive at Launceston airport at 14.40 and 16.40, transport would leave Launceston airport following the 16.40 Qantas flight from Melbourne.
- We will return to Launceston Airport for the 19:10 flight back to Melbourne.

Links for accommodation

<http://www.cradlemountainlodge.com.au/accommodation/>

Or

<http://www.tullahresort.com.au/>

If you have any questions—please call;
David Beck 0412 135782
Cameron Tucker 0400 449 845